

County(s): Sussex County



2000 Total Population	156,638
2000 Group Quarters	3,439
2005 Total Population	178,807
2010 Total Population	203,222
2005 - 2010 Annual Rate	2.59%



2000 Households	62,577
2000 Average Household Size	2.45
2005 Households	72,272
2005 Average Household Size	2.43
2010 Households	82,819
2010 Average Household Size	2.41
2005 - 2010 Annual Rate	2.76%
2000 Families	43,869
2000 Average Family Size	2.88
2005 Families	49,600
2005 Average Family Size	2.86
2010 Families	55,709
2010 Average Family Size	2.86
2005 - 2010 Annual Rate	2.35%



2000 Housing Units	93,070
Owner Occupied Housing Units	54.2%
Renter Occupied Housing Units	13.0%
Vacant Housing Units	32.8%
2005 Housing Units	105,821
Owner Occupied Housing Units	56.5%
Renter Occupied Housing Units	11.8%
Vacant Housing Units	31.7%
2010 Housing Units	119,438
Owner Occupied Housing Units	57.9%
Renter Occupied Housing Units	11.4%
Vacant Housing Units	30.7%

Median Household Income

2000	\$39,138
2005	\$46,199
2010	\$53,682

Median Home Value

2000	\$99,741
2005	\$158,765
2010	\$208,887

Per Capita Income

2000	\$20,328
2005	\$25,117
2010	\$31,843

Median Age

2000	41.1
2005	43.4
2010	45.5

Data Note: Household population includes persons not residing in group quarters. Average Household Size is the household population divided by total households. Persons in families include the householder and persons related to the householder by birth, marriage, or adoption. Per Capita Income represents the income received by all persons aged 15 years and over divided by total population. Detail may not sum to totals due to rounding.

Source: U.S. Bureau of the Census, 2000 Census of Population and Housing. ESRI forecasts for 2005 and 2010.

County(s): Sussex County



2000 Households by Income

Household Income Base	62,582
< \$15,000	15.7%
\$15,000 - \$24,999	13.8%
\$25,000 - \$34,999	15.0%
\$35,000 - \$49,999	18.6%
\$50,000 - \$74,999	20.4%
\$75,000 - \$99,999	8.0%
\$100,000 - \$149,999	5.5%
\$150,000 - \$199,999	1.3%
\$200,000+	1.6%
Average Household Income	\$49,926

2005 Households by Income

Household Income Base	72,272
< \$15,000	12.7%
\$15,000 - \$24,999	11.2%
\$25,000 - \$34,999	12.8%
\$35,000 - \$49,999	17.5%
\$50,000 - \$74,999	20.9%
\$75,000 - \$99,999	10.8%
\$100,000 - \$149,999	9.0%
\$150,000 - \$199,999	2.2%
\$200,000+	2.8%
Average Household Income	\$61,538

2010 Households by Income

Household Income Base	82,819
< \$15,000	10.7%
\$15,000 - \$24,999	9.2%
\$25,000 - \$34,999	10.6%
\$35,000 - \$49,999	15.7%
\$50,000 - \$74,999	20.4%
\$75,000 - \$99,999	11.8%
\$100,000 - \$149,999	12.2%
\$150,000 - \$199,999	4.3%
\$200,000+	5.1%
Average Household Income	\$77,555

2000 Owner Occupied HUs by Value

Total	50,505
<\$50,000	18.2%
\$50,000 - 99,999	32.0%
\$100,000 - 149,999	22.2%
\$150,000 - 199,999	13.1%
\$200,000 - \$299,999	8.3%
\$300,000 - 499,999	4.1%
\$500,000 - 999,999	1.5%
\$1,000,000+	0.5%
Average Home Value	\$132,993

2000 Specified Renter Occupied HUs by Contract Rent

Total	11,793
With Cash Rent	87.8%
No Cash Rent	12.2%
Median Rent	\$407
Average Rent	\$407

Data Note: Income represents the preceding year, expressed in current dollars. Household income includes wage and salary earnings, interest, dividends, net rents, pensions, SSI and welfare payments, child support and alimony. Specified Renter Occupied HUs exclude houses on 10+ acres. Average Rent excludes units paying no cash rent.

Source: U.S. Bureau of the Census, 2000 Census of Population and Housing. ESRI forecasts for 2005 and 2010.

County(s): Sussex County



2000 Population by Age

Total	156,638
0 - 4	5.8%
5 - 9	6.4%
10 - 14	6.5%
15 - 24	10.9%
25 - 34	11.4%
35 - 44	15.0%
45 - 54	13.6%
55 - 64	12.0%
65 - 74	10.9%
75 - 84	6.0%
85+	1.6%
18+	77.5%

2005 Population by Age

Total	178,807
0 - 4	5.7%
5 - 9	5.5%
10 - 14	6.2%
15 - 24	10.9%
25 - 34	10.3%
35 - 44	13.7%
45 - 54	14.4%
55 - 64	13.4%
65 - 74	11.1%
75 - 84	6.7%
85+	1.9%
18+	79.1%

2010 Population by Age

Total	203,222
0 - 4	5.5%
5 - 9	5.2%
10 - 14	6.0%
15 - 24	10.7%
25 - 34	9.8%
35 - 44	11.9%
45 - 54	15.3%
55 - 64	14.8%
65 - 74	11.1%
75 - 84	7.2%
85+	2.3%
18+	79.8%

2000 Population by Sex

Males	48.9%
Females	51.1%

2005 Population by Sex

Males	48.9%
Females	51.1%

2010 Population by Sex

Males	49.0%
Females	51.0%

Source: U.S. Bureau of the Census, 2000 Census of Population and Housing. ESRI forecasts for 2005 and 2010.

County(s): Sussex County



2000 Population by Race/Ethnicity

Total	156,638
White Alone	80.3%
Black Alone	14.9%
American Indian Alone	0.6%
Asian or Pacific Islander Alone	0.8%
Some Other Race Alone	2.0%
Two or More Races	1.4%
Hispanic Origin	4.4%
Diversity Index	38.9

2005 Population by Race/Ethnicity

Total	178,807
White Alone	78.6%
Black Alone	15.9%
American Indian Alone	0.6%
Asian or Pacific Islander Alone	1.1%
Some Other Race Alone	2.4%
Two or More Races	1.5%
Hispanic Origin	5.2%
Diversity Index	42.1

2010 Population by Race/Ethnicity

Total	203,222
White Alone	76.9%
Black Alone	16.8%
American Indian Alone	0.6%
Asian or Pacific Islander Alone	1.3%
Some Other Race Alone	2.7%
Two or More Races	1.7%
Hispanic Origin	6.2%
Diversity Index	45.2



2000 Population 3+ by School Enrollment

Total	151,186
Enrolled in Nursery/Preschool	1.5%
Enrolled in Kindergarten	1.3%
Enrolled in Grade 1-8	10.7%
Enrolled in Grade 9-12	5.5%
Enrolled in College	3.0%
Enrolled in Grad/Prof School	0.6%
Not Enrolled in School	77.4%

2000 Population 25+ by Educational Attainment

Total	110,599
Less than 9th Grade	7.0%
9th - 12th Grade, No Diploma	16.5%
High School Graduate	35.6%
Some College, No Degree	18.2%
Associate Degree	6.1%
Bachelor's Degree	10.1%
Master's/Prof/Doctorate Degree	6.5%

Data Note: Persons of Hispanic Origin may be of any race. The Diversity Index measures the probability that two people from the same area will be from different race/ethnic groups.

Source: U.S. Bureau of the Census, 2000 Census of Population and Housing. ESRI forecasts for 2005 and 2010.

County(s): Sussex County



2000 Population 15+ by Sex and Marital Status

Total	127,285
Females	51.6%
Never Married	9.7%
Married, not Separated	28.8%
Married, Separated	1.1%
Widowed	6.7%
Divorced	5.3%
Males	48.4%
Never Married	11.4%
Married, not Separated	30.4%
Married, Separated	0.8%
Widowed	1.8%
Divorced	4.0%



2000 Population 16+ by Employment Status

Total	125,358
In Labor Force	58.5%
Civilian Employed	55.5%
Civilian Unemployed	2.8%
In Armed Forces	0.1%
Not in Labor Force	41.5%

2005 Civilian Population 16+ in Labor Force

Civilian Employed	97.0%
Civilian Unemployed	3.0%

2010 Civilian Population 16+ in Labor Force

Civilian Employed	97.4%
Civilian Unemployed	2.6%

2000 Females 16+ by Employment Status and Age of Children

Total	64,929
Own Children < 6 Only	6.0%
Employed/in Armed Forces	3.9%
Unemployed	0.3%
Not in Labor Force	1.9%
Own Children < 6 and 6-17 Only	5.0%
Employed/in Armed Forces	2.9%
Unemployed	0.1%
Not in Labor Force	2.0%
Own Children 6-17 Only	15.3%
Employed/in Armed Forces	11.7%
Unemployed	0.5%
Not in Labor Force	3.1%
No Own Children < 18	73.7%
Employed/in Armed Forces	31.6%
Unemployed	2.0%
Not in Labor Force	40.1%

Source: U.S. Bureau of the Census, 2000 Census of Population and Housing. ESRI forecasts for 2005.

County(s): Sussex County



2005 Employed Population 16+ by Industry

Total	84,090
Agriculture/Mining	2.2%
Construction	12.4%
Manufacturing	11.2%
Wholesale Trade	2.9%
Retail Trade	14.5%
Transportation/Utilities	4.4%
Information	1.2%
Finance/Insurance/Real Estate	6.3%
Services	39.8%
Public Administration	5.2%

2005 Employed Population 16+ by Occupation

Total	84,090
White Collar	53.9%
Management/Business/Financial	10.1%
Professional	18.1%
Sales	12.7%
Administrative Support	13.0%
Services	16.4%
Blue Collar	29.7%
Farming/Forestry/Fishing	1.2%
Construction/Extraction	9.4%
Installation/Maintenance/Repair	4.3%
Production	9.2%
Transportation/Material Moving	5.6%



2000 Workers 16+ by Means of Transportation to Work

Total	68,123
Drove Alone - Car, Truck, or Van	79.5%
Carpooled - Car, Truck, or Van	12.4%
Public Transportation	0.7%
Walked	2.2%
Other Means	1.1%
Worked at Home	4.1%

2000 Workers 16+ by Travel Time to Work

Total	68,123
Did Not Work at Home	95.9%
Less than 5 minutes	4.3%
5 to 9 minutes	12.6%
10 to 19 minutes	29.9%
20 to 24 minutes	13.9%
25 to 34 minutes	18.3%
35 to 44 minutes	5.0%
45 to 59 minutes	6.0%
60 to 89 minutes	3.2%
90 or more minutes	2.7%
Worked at Home	4.1%
Average Travel Time to Work (in min)	24.0

2000 Households by Vehicles Available

Total	62,577
None	5.8%
1	33.8%
2	42.5%
3	13.4%
4	3.3%
5+	1.3%
Average Number of Vehicles Available	1.8

Source: U.S. Bureau of the Census, 2000 Census of Population and Housing. ESRI forecasts for 2005 and 2010.

County(s): Sussex County



2000 Households by Type

Total	62,577
Family Households	70.1%
Married-couple Family	54.9%
With Related Children	19.9%
Other Family (No Spouse)	15.2%
With Related Children	10.2%
Nonfamily Households	29.9%
Householder Living Alone	24.3%
Householder Not Living Alone	5.5%
Households with Related Children	30.1%
Households with Persons 65+	31.8%

2000 Households by Size

Total	62,577
1 Person Household	24.3%
2 Person Household	40.1%
3 Person Household	15.6%
4 Person Household	11.8%
5 Person Household	5.2%
6 Person Household	1.8%
7+ Person Household	1.2%

2000 Households by Year Householder Moved In

Total	62,577
Moved in 1999 to March 2000	15.7%
Moved in 1995 to 1998	28.7%
Moved in 1990 to 1994	18.1%
Moved in 1980 to 1989	18.8%
Moved in 1970 to 1979	9.4%
Moved in 1969 or Earlier	9.4%
Median Year Householder Moved In	1993



2000 Housing Units by Units in Structure

Total	93,070
1, Detached	59.3%
1, Attached	4.8%
2	1.5%
3 or 4	1.6%
5 to 9	2.8%
10 to 19	1.3%
20+	2.5%
Mobile Home	25.6%
Other	0.6%

2000 Housing Units by Year Structure Built

Total	93,070
1999 to March 2000	4.4%
1995 to 1998	11.8%
1990 to 1994	12.7%
1980 to 1989	23.7%
1970 to 1979	18.3%
1969 or Earlier	29.1%
Median Year Structure Built	1981

Source: U.S. Bureau of the Census, 2000 Census of Population and Housing.

Top 3 Tapestry Segments

1.	Rural Resort Dwellers
2.	Midland Crowd
3.	Silver and Gold



2005 Consumer Spending shows the amount spent on a variety of goods and services by households that reside in the market area. Expenditures are shown by broad budget categories that are not mutually exclusive. Consumer spending does not equal business revenue.

Apparel & Services: Total \$	\$169,421,340
Average Spent	\$2,344.22
Spending Potential Index	86
Computers & Accessories: Total \$	\$16,567,731
Average Spent	\$229.24
Spending Potential Index	84
Education: Total \$	\$57,894,313
Average Spent	\$801.06
Spending Potential Index	77
Entertainment/Recreation: Total \$	\$202,984,378
Average Spent	\$2,808.62
Spending Potential Index	92
Food at Home: Total \$	\$316,943,962
Average Spent	\$4,385.43
Spending Potential Index	94
Food Away from Home: Total \$	\$200,165,524
Average Spent	\$2,769.61
Spending Potential Index	89
Health Care: Total \$	\$268,831,512
Average Spent	\$3,719.72
Spending Potential Index	109
HH Furnishings & Equipment: Total \$	\$135,237,646
Average Spent	\$1,871.23
Spending Potential Index	90
Investments: Total \$	\$387,641,512
Average Spent	\$5,363.65
Spending Potential Index	65
Retail Goods: Total \$	\$1,708,666,915
Average Spent	\$23,642.17
Spending Potential Index	96
Shelter: Total \$	\$809,757,626
Average Spent	\$11,204.31
Spending Potential Index	83
TV/Video/Sound Equipment: Total \$	\$66,675,980
Average Spent	\$922.57
Spending Potential Index	91
Travel: Total \$	\$114,955,066
Average Spent	\$1,590.59
Spending Potential Index	89
Vehicle Maintenance & Repairs: Total \$	\$69,138,057
Average Spent	\$956.64
Spending Potential Index	94

Data Note: The Spending Potential Index represents the amount spent in the area relative to a national average of 100.

Source: Expenditure data are derived from the 2000, 2001 and 2002 Consumer Expenditure Surveys, Bureau of Labor Statistics. ESRI forecasts for 2005 and 2010.

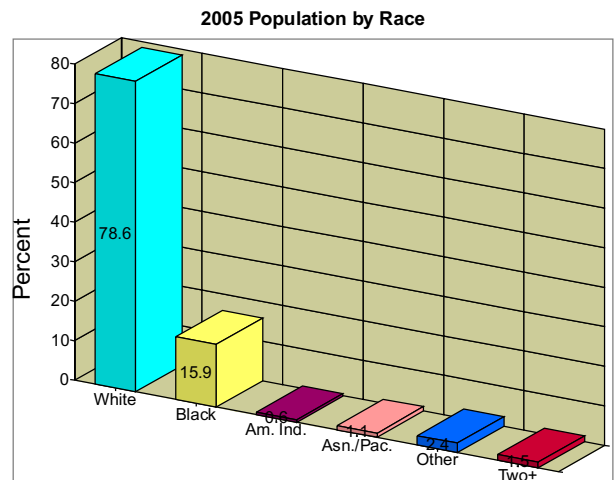
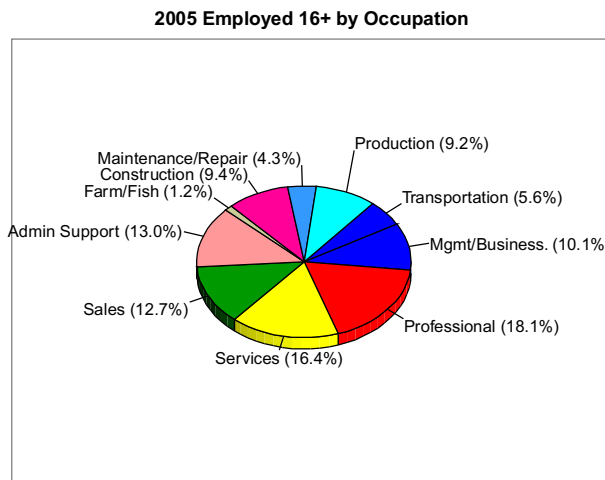
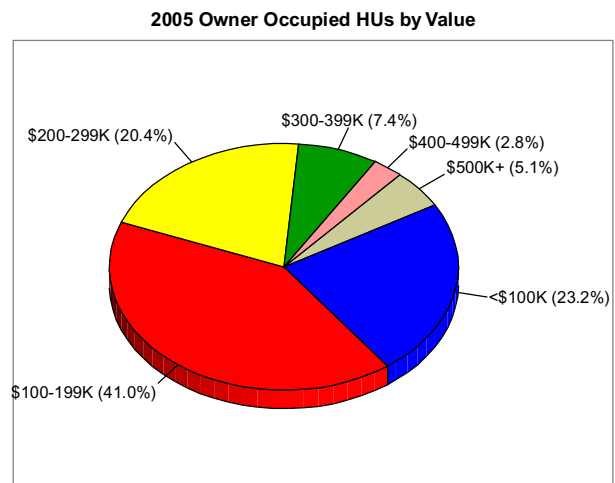
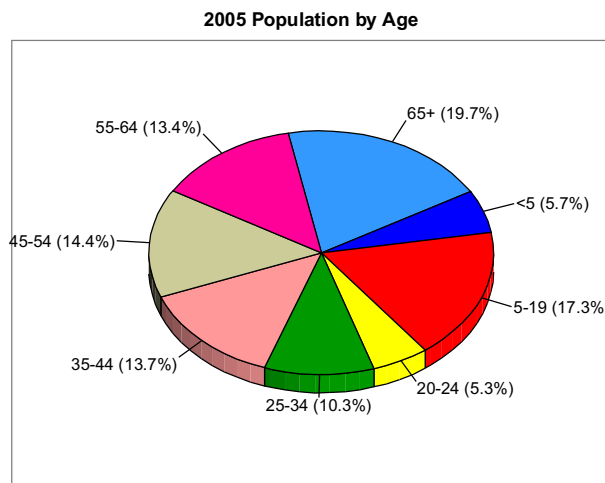
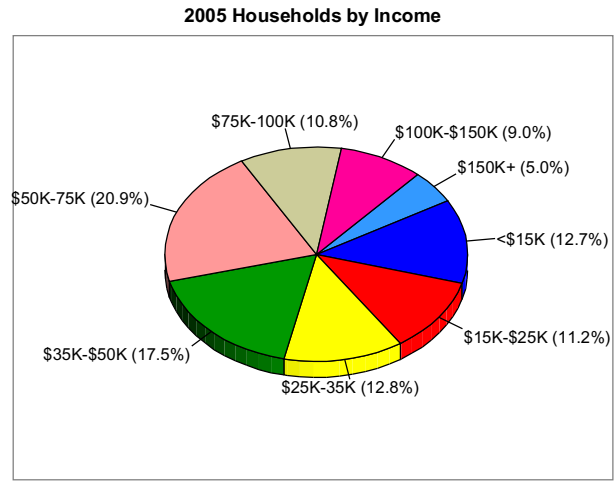
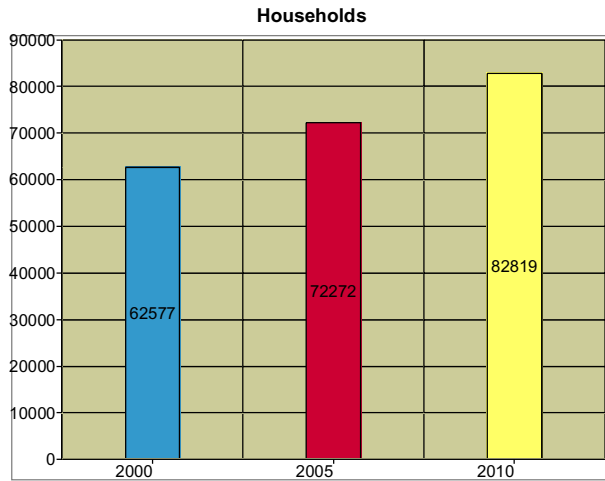
County(s): Sussex County

Total Businesses:	7,806
Total Employees:	65,915
Total Residential Population:	178,807
Daytime/Nighttime Population Ratio:	0.37

	Businesses		Employees	
	Number	Percent	Number	Percent
Agriculture & Mining	229	2.9%	2,448	3.7%
Construction	969	12.4%	4,763	7.2%
Manufacturing	187	2.4%	7,026	10.7%
Transportation	214	2.7%	1,122	1.7%
Communication	24	0.3%	131	0.2%
Electric, Gas, Water, Sanitary Services	24	0.3%	226	0.3%
Wholesale Trade	322	4.1%	3,419	5.2%
Retail Trade Summary	2,120	27.2%	18,732	28.4%
Home Improvement	174	2.2%	1,301	2.0%
General Merchandise Stores	54	0.7%	1,642	2.5%
Food Stores	197	2.5%	2,330	3.5%
Auto Dealers, Gas Stations, Auto Aftermarket	218	2.8%	1,478	2.2%
Apparel & Accessory Stores	171	2.2%	974	1.5%
Furniture & Home Furnishings	218	2.8%	999	1.5%
Eating & Drinking Places	453	5.8%	7,383	11.2%
Miscellaneous Retail	635	8.1%	2,625	4.0%
Finance, Insurance, Real Estate Summary	560	7.2%	3,237	4.9%
Banks, Savings & Lending Institutions	142	1.8%	861	1.3%
Securities Brokers	26	0.3%	90	0.1%
Insurance Carriers & Agents	98	1.3%	351	0.5%
Real Estate, Holding, Other Investment Offices	294	3.8%	1,935	2.9%
Services Summary	2,817	36.1%	19,665	29.8%
Hotels & Lodging	150	1.9%	1,340	2.0%
Automotive Services	179	2.3%	551	0.8%
Motion Pictures & Amusements	200	2.6%	1,235	1.9%
Health Services	414	5.3%	5,449	8.3%
Legal Services	87	1.1%	476	0.7%
Education Institutions & Libraries	108	1.4%	4,263	6.5%
Other Services	1,679	21.5%	6,351	9.6%
Government	262	3.4%	4,978	7.6%
Other	78	1.0%	168	0.3%
Totals	7,806	100.0%	65,915	100.0%

Source: Business data provided by InfoUSA, Omaha NE Copyright 2005, all rights reserved. ESRI forecasts for 2005.

County(s): Sussex County



2005 Percent Hispanic Origin: 5.2%

Source: U.S. Bureau of the Census, 2000 Census of Population and Housing. ESRI forecasts for 2005 and 2010.

County(s): Sussex County

	1990		Census 2000		1990-2000 Annual Rate
	Number	Percent	Number	Percent	
Total Population	113,229	-	156,638	-	3.30%
Total Households	43,681	100.0%	62,577	100.0%	3.66%
Average Household Size	2.54	-	2.45	-	-0.36%
Total Families	32,016	73.3%	43,869	70.1%	3.20%
Average Family Size	2.96	-	2.88	-	-0.27%
Per Capita Income	\$12,723	-	\$20,328	-	4.80%
Total Housing Units	74,253	-	93,070	-	2.28%
Population by Sex					
Male	54,784	48.4%	76,528	48.9%	3.40%
Female	58,445	51.6%	80,110	51.1%	3.20%
Population by Age					
Total	113,229	100.0%	156,638	100.0%	3.30%
Age 0 - 4	7,693	6.8%	9,009	5.8%	1.59%
Age 5 - 9	7,885	7.0%	9,960	6.4%	2.36%
Age 10 - 14	7,364	6.5%	10,250	6.5%	3.36%
Age 15 - 19	6,868	6.1%	9,480	6.1%	3.28%
Age 20 - 24	6,847	6.0%	7,556	4.8%	0.99%
Age 25 - 29	8,580	7.6%	8,247	5.3%	-0.40%
Age 30 - 34	9,013	8.0%	9,564	6.1%	0.60%
Age 35 - 39	8,446	7.5%	11,643	7.4%	3.26%
Age 40 - 44	7,551	6.7%	11,782	7.5%	4.55%
Age 45 - 49	6,177	5.5%	10,835	6.9%	5.78%
Age 50 - 54	5,340	4.7%	10,477	6.7%	6.97%
Age 55 - 59	5,710	5.0%	9,615	6.1%	5.35%
Age 60 - 64	6,824	6.0%	9,198	5.9%	3.03%
Age 65 - 69	6,904	6.1%	9,086	5.8%	2.78%
Age 70 - 74	5,062	4.5%	8,005	5.1%	4.69%
Age 75 - 79	3,330	2.9%	5,828	3.7%	5.76%
Age 80 - 84	2,034	1.8%	3,534	2.3%	5.68%
Age 85+	1,601	1.4%	2,569	1.6%	4.84%
Median Age	36.4		41.1		1.22%
Age 18+	86,141	76.1%	121,333	77.5%	3.48%
Age 65+	18,931	16.7%	29,022	18.5%	4.37%
Households by Household Income					
Household Income Base	43,483	100.0%	62,582	100.0%	3.71%
<\$15,000	10,996	25.3%	9,844	15.7%	-1.10%
\$15,000 - \$24,999	9,148	21.0%	8,665	13.8%	-0.54%
\$25,000 - \$34,999	7,669	17.6%	9,370	15.0%	2.02%
\$35,000 - \$49,999	7,680	17.7%	11,671	18.6%	4.27%
\$50,000 - \$74,999	5,666	13.0%	12,752	20.4%	8.45%
\$75,000 - \$99,999	1,276	2.9%	5,027	8.0%	14.70%
\$100,000 - \$149,999	744	1.7%	3,434	5.5%	16.53%
\$150,000+	304	0.7%	1,819	2.9%	19.59%
Median Household Income	\$26,904		\$39,138		3.82%
Average Household Income	\$32,613		\$49,926		4.35%

Data Note: Detail may not sum to totals due to rounding. Census 2000 medians are computed from reported data distributions. The "1990-2000 Annual Rate" is an annual compound rate.

Source: U.S. Bureau of the Census, 2000 Census of Population and Housing. ESRI converted 1990 Census data into 2000 geography.

County(s): Sussex County

	1990		Census 2000		1990-2000
	Number	Percent	Number	Percent	Annual Rate
Families by Family Income					
Family Income Base	32,150	100.0%	44,090	100.0%	3.21%
<\$15,000	5,303	16.5%	4,099	9.3%	-2.54%
\$15,000 - \$24,999	6,706	20.9%	5,238	11.9%	-2.44%
\$25,000 - \$34,999	6,412	19.9%	6,590	14.9%	0.27%
\$35,000 - \$49,999	6,652	20.7%	9,087	20.6%	3.17%
\$50,000 - \$74,999	5,039	15.7%	10,546	23.9%	7.66%
\$75,000 - \$99,999	1,112	3.5%	4,117	9.3%	13.98%
\$100,000 - \$149,999	675	2.1%	2,945	6.7%	15.87%
\$150,000+	251	0.8%	1,468	3.3%	19.32%
Median Family Income	\$31,111		\$45,190		3.80%
Average Family Income	\$36,606		\$55,370		4.22%
Households by Poverty Status and Household Type					
Total	43,483	100.0%	62,582	100.0%	3.71%
Below Poverty Level	4,872	11.2%	6,318	10.1%	2.63%
Married-couple Family	1,023	2.4%	1,435	2.3%	3.44%
Other Family - Male Householder, No Wife	206	0.5%	317	0.5%	4.40%
Other Family - Female Householder, No Husband	1,270	2.9%	1,651	2.6%	2.66%
Nonfamily Households	2,373	5.5%	2,915	4.7%	2.08%
At or Above Poverty Level	38,611	88.8%	56,264	89.9%	3.84%
Married-couple Family	25,069	57.7%	33,747	53.9%	3.02%
Other Family - Male Householder, No Wife	1,256	2.9%	2,005	3.2%	4.79%
Other Family - Female Householder, No Husband	3,326	7.6%	4,935	7.9%	4.02%
Nonfamily Households	8,960	20.6%	15,577	24.9%	5.69%
Households by Type					
Total	43,681	100.0%	62,577	100.0%	3.66%
Family Households	32,016	73.3%	43,869	70.1%	3.20%
Married-couple Families	25,672	58.8%	34,353	54.9%	2.96%
With Related Children	10,621	24.3%	12,446	19.9%	1.60%
Other Family (No Spouse Present)	6,344	14.5%	9,516	15.2%	4.14%
With Related Children	4,058	9.3%	6,391	10.2%	4.65%
Nonfamily Households	11,665	26.7%	18,708	29.9%	4.84%
Householder Living Alone	9,736	22.3%	15,235	24.3%	4.58%
Householder not Living Alone	1,929	4.4%	3,473	5.5%	6.06%
Households with Related Children	14,679	33.6%	18,837	30.1%	2.53%
Households by Vehicles Available					
Total	43,681	100.0%	62,577	100.0%	3.66%
None	2,689	6.2%	3,638	5.8%	3.07%
1	14,220	32.6%	21,133	33.8%	4.04%
2	17,829	40.8%	26,575	42.5%	4.07%
3	6,318	14.5%	8,384	13.4%	2.87%
4	1,879	4.3%	2,061	3.3%	0.93%
5+	746	1.7%	786	1.3%	0.52%
Average Number of Vehicles Available	1.8		1.8		0.00%

Source: U.S. Bureau of the Census, 2000 Census of Population and Housing. ESRI converted 1990 Census data into 2000 geography.

County(s): Sussex County

	1990		Census 2000		1990-2000
	Number	Percent	Number	Percent	Annual Rate
Housing Units by Occupancy					
Total	74,253	100.0%	93,070	100.0%	2.28%
Occupied Housing Units	43,681	58.8%	62,577	67.2%	3.66%
Owner Occupied Housing Units	34,325	46.2%	50,484	54.2%	3.93%
Renter Occupied Housing Units	9,356	12.6%	12,093	13.0%	2.60%
Vacant Housing Units	30,572	41.2%	30,493	32.8%	-0.03%
For Rent	1,396	1.9%	1,877	2.0%	3.00%
For Sale Only	1,421	1.9%	1,104	1.2%	-2.49%
Rented or Sold, not Occupied	579	0.8%	503	0.5%	-1.40%
For Seasonal/Recreational/Occasional Use	18,631	25.1%	24,906	26.8%	2.95%
For Migrant Workers	19	0.0%	24	0.0%	2.36%
Other Vacant	8,526	11.5%	2,079	2.2%	-13.16%
Housing Units by Units in Structure					
Total	74,253	100.0%	93,070	100.0%	2.28%
1, Detached	42,337	57.0%	55,171	59.3%	2.68%
1, Attached	3,339	4.5%	4,501	4.8%	3.03%
2	1,276	1.7%	1,362	1.5%	0.65%
3 or 4	991	1.3%	1,476	1.6%	4.06%
5 to 9	1,709	2.3%	2,562	2.8%	4.13%
10 to 19	931	1.3%	1,229	1.3%	2.82%
20+	1,909	2.6%	2,357	2.5%	2.13%
Mobile Home	21,222	28.6%	23,817	25.6%	1.16%
Other	539	0.7%	595	0.6%	0.99%
Specified Owner Occupied HUs by Value					
Total	21,751	100.0%	33,908	100.0%	4.54%
<\$50,000	4,322	19.9%	1,487	4.4%	-10.12%
\$50,000 - \$99,999	10,271	47.2%	10,965	32.3%	0.66%
\$100,000 - \$149,999	3,777	17.4%	9,594	28.3%	9.77%
\$150,000 - \$199,999	1,740	8.0%	5,722	16.9%	12.64%
\$200,000 - \$299,999	1,093	5.0%	3,603	10.6%	12.67%
\$300,000 - \$499,999	424	1.9%	1,749	5.2%	15.22%
\$500,000+	124	0.6%	788	2.3%	20.31%
Median Home Value	\$79,774		\$122,411		4.37%
Average Home Value	\$99,649		\$156,441		4.61%
Specified Renter Occupied HUs by Rent					
Total	8,840	100.0%	11,793	100.0%	2.92%
With Cash Rent	7,942	89.8%	10,355	87.8%	2.69%
<\$200	2,342	26.5%	1,714	14.5%	-3.07%
\$200 - \$499	5,025	56.8%	5,557	47.1%	1.01%
\$500 - \$749	514	5.8%	2,487	21.1%	17.08%
\$750 - \$999	22	0.2%	389	3.3%	33.28%
\$1,000+	39	0.4%	208	1.8%	18.22%
No Cash Rent	898	10.2%	1,438	12.2%	4.82%
Median Rent	\$278		\$407		3.89%
Average Rent	\$282		\$407		3.74%

Data Note: Specified owner occupied HUs include only single family units on less than 10 acres, with no business or medical office on site. Specified renter occupied HUs exclude single family units on 10+ acres. Average Rent excludes units paying no cash rent. Rent, Home Value, and Units in Structure data are complete counts in 1990 and sample counts in 2000, so changes in enumeration can affect comparability.

Source: U.S. Bureau of the Census, 2000 Census of Population and Housing. ESRI converted 1990 Census data into 2000 geography.

County(s): Sussex County

	1990		Census 2000		1990-2000
	Number	Percent	Number	Percent	Annual Rate
Population 16+ by Employment Status					
Total	88,867	100.0%	125,358	100.0%	3.50%
In Labor Force	55,152	62.1%	73,325	58.5%	2.89%
Civilian Employed	52,710	59.3%	69,596	55.5%	2.82%
Civilian Unemployed	2,255	2.5%	3,565	2.8%	4.69%
In Armed Forces	187	0.2%	164	0.1%	-1.30%
Not in Labor Force	33,715	37.9%	52,033	41.5%	4.43%
Workers 16+ by Place of Work					
Total	51,785	100.0%	68,123	100.0%	2.78%
Worked in State of Residence	45,428	87.7%	58,896	86.5%	2.63%
Worked in County of Residence	41,321	79.8%	52,073	76.4%	2.34%
Worked outside County of Residence	4,107	7.9%	6,823	10.0%	5.21%
Worked outside State of Residence	6,357	12.3%	9,227	13.5%	3.80%
Workers 16+ by Transportation to Work					
Total	51,785	100.0%	68,123	100.0%	2.78%
Drove Alone - Car, Truck, or Van	40,397	78.0%	54,173	79.5%	2.98%
Carpooled - Car, Truck, or Van	6,717	13.0%	8,431	12.4%	2.30%
Public Transportation	413	0.8%	445	0.7%	0.75%
Walked	1,449	2.8%	1,528	2.2%	0.53%
Other Means	695	1.3%	740	1.1%	0.63%
Worked at Home	2,114	4.1%	2,806	4.1%	2.87%
Workers 16+ by Travel Time to Work					
Total	51,785	100.0%	68,123	100.0%	2.78%
Did not Work at Home	49,671	95.9%	65,317	95.9%	2.78%
Less than 5 minutes	2,925	5.6%	2,934	4.3%	0.03%
5 to 9 minutes	7,356	14.2%	8,579	12.6%	1.55%
10 to 19 minutes	17,343	33.5%	20,364	29.9%	1.62%
20 to 24 minutes	7,308	14.1%	9,475	13.9%	2.63%
25 to 34 minutes	9,101	17.6%	12,446	18.3%	3.18%
35 to 44 minutes	2,137	4.1%	3,414	5.0%	4.80%
45 to 59 minutes	2,182	4.2%	4,094	6.0%	6.50%
60 to 89 minutes	1,109	2.1%	2,147	3.2%	6.83%
90 or more minutes	210	0.4%	1,864	2.7%	24.40%
Worked at Home	2,114	4.1%	2,806	4.1%	2.87%
Average Travel Time to Work (in minutes)	18.9		24.0		2.42%
Population 15+ by Sex and Marital Status					
Total	90,287	100.0%	127,285	100.0%	3.49%
Females	47,177	52.3%	65,699	51.6%	3.37%
Never Married	8,633	9.6%	12,405	9.7%	3.69%
Married, not Separated	26,585	29.4%	36,673	28.8%	3.27%
Married, Separated	1,299	1.4%	1,461	1.1%	1.18%
Widowed	6,745	7.5%	8,476	6.7%	2.31%
Divorced	3,915	4.3%	6,684	5.3%	5.49%
Males	43,110	47.7%	61,586	48.4%	3.63%
Never Married	10,674	11.8%	14,490	11.4%	3.10%
Married, not Separated	26,674	29.5%	38,665	30.4%	3.78%
Married, Separated	1,105	1.2%	1,034	0.8%	-0.66%
Widowed	1,498	1.7%	2,260	1.8%	4.20%
Divorced	3,159	3.5%	5,137	4.0%	4.98%

Data Note: Marital status data are complete counts in 1990 and sample counts in Census 2000, so changes in enumeration can affect comparability.

Source: U.S. Bureau of the Census, 2000 Census of Population and Housing. ESRI converted 1990 Census data into 2000 geography.

County(s): Sussex County

	1990		Census 2000		1990-2000 Annual Rate
	Number	Percent	Number	Percent	
Population by Race					
Total	113,229	100.0%	156,638	100.0%	3.30%
White Alone	91,352	80.7%	125,857	80.3%	3.26%
Black or African American Alone	18,955	16.7%	23,319	14.9%	2.09%
American Indian or Alaskan Native Alone	645	0.6%	946	0.6%	3.90%
Asian Alone	561	0.5%	1,172	0.7%	7.65%
Pacific Islander Alone	28	0.0%	68	0.0%	9.28%
Some Other Race Alone	604	0.5%	3,157	2.0%	17.98%
Two or More Races	1,084	1.0%	2,119	1.4%	6.93%
Diversity Index	33.8		38.9		1.42%
Hispanic Population by Race					
Total	1,476	100.0%	6,915	100.0%	16.70%
White Alone	680	46.1%	2,969	42.9%	15.88%
Black or African American Alone	195	13.2%	302	4.4%	4.47%
American Indian or Alaskan Native Alone	4	0.3%	191	2.8%	47.20%
Asian or Pacific Islander Alone	21	1.4%	36	0.5%	5.54%
Some Other Race Alone	566	38.3%	2,997	43.3%	18.14%
Two or More Races	10	0.7%	420	6.1%	45.32%
Population 3+ by School Enrollment					
Total	108,734	100.0%	151,186	100.0%	3.35%
Enrolled in Public Preschool/Kindergarten	1,009	0.9%	2,854	1.9%	10.96%
Enrolled in Private Preschool/Kindergarten	501	0.5%	1,342	0.9%	10.35%
Enrolled in Public Elementary/High School	17,276	15.9%	22,891	15.1%	2.85%
Enrolled in Private Elementary/High School	989	0.9%	1,637	1.1%	5.17%
Enrolled in Public College	4,172	3.8%	4,343	2.9%	0.40%
Enrolled in Private College	719	0.7%	1,112	0.7%	4.46%
Not Enrolled in School	84,068	77.3%	117,007	77.4%	3.36%
Population 25+ by Educational Attainment					
Total	76,974	100.0%	110,599	100.0%	3.69%
Less than 9th Grade	8,391	10.9%	7,752	7.0%	-0.79%
9th - 12th Grade, No Diploma	14,939	19.4%	18,227	16.5%	2.01%
High School Graduate	28,718	37.3%	39,366	35.6%	3.20%
Some College, No Degree	10,571	13.7%	20,177	18.2%	6.68%
Associate Degree	4,370	5.7%	6,703	6.1%	4.37%
Bachelor's Degree	6,765	8.8%	11,199	10.1%	5.17%
Master's/Professional/Doctorate Degree	3,220	4.2%	7,175	6.5%	8.34%

Data Note: The 1990 Census reported population by single races only. ESRI estimates the multiracial population from 1990 Census data for the total population. In the 1990 Census, "Asian" and "Pacific Islander" were not reported separately for the Hispanic Origin population. To compare the data, "Asian" and "Pacific Islander" are combined in 2000. The Diversity Index summarizes racial and ethnic diversity. The index shows the likelihood that two persons, chosen at random from the same area, belong to different race or ethnic groups.

Source: U.S. Bureau of the Census, 2000 Census of Population and Housing. ESRI converted 1990 Census data into 2000 geography.